



NOAA
FISHERIES

Southeast
Regional
Office

Gulf of Mexico Recreational Discards and Landings

Andy Strelcheck

Recreational Initiative Meeting

January 2024

Background

- Annual recreational discards and landings for 5 Gulf stocks: *red snapper, gray triggerfish, red grouper, gag, and greater amberjack*

Data came from the following 4 recreational surveys:

- Texas Parks and Wildlife Coastal Creel Survey (TPWD)
- Louisiana Department of Wildlife and Fisheries Creel Survey (LA Creel)
- Southeast Region Headboat Survey
- Marine Recreational Information Program (MRIP)



More Background

- MRIP discards and landings were either based on the Coastal Household Telephone Survey (CHTS) or Fishing Effort Survey (FES)

Stock	Data
Red Snapper	CHTS
Gray Triggerfish	CHTS
Red Grouper	FES
Gag	FES
Greater Amberjack	FES

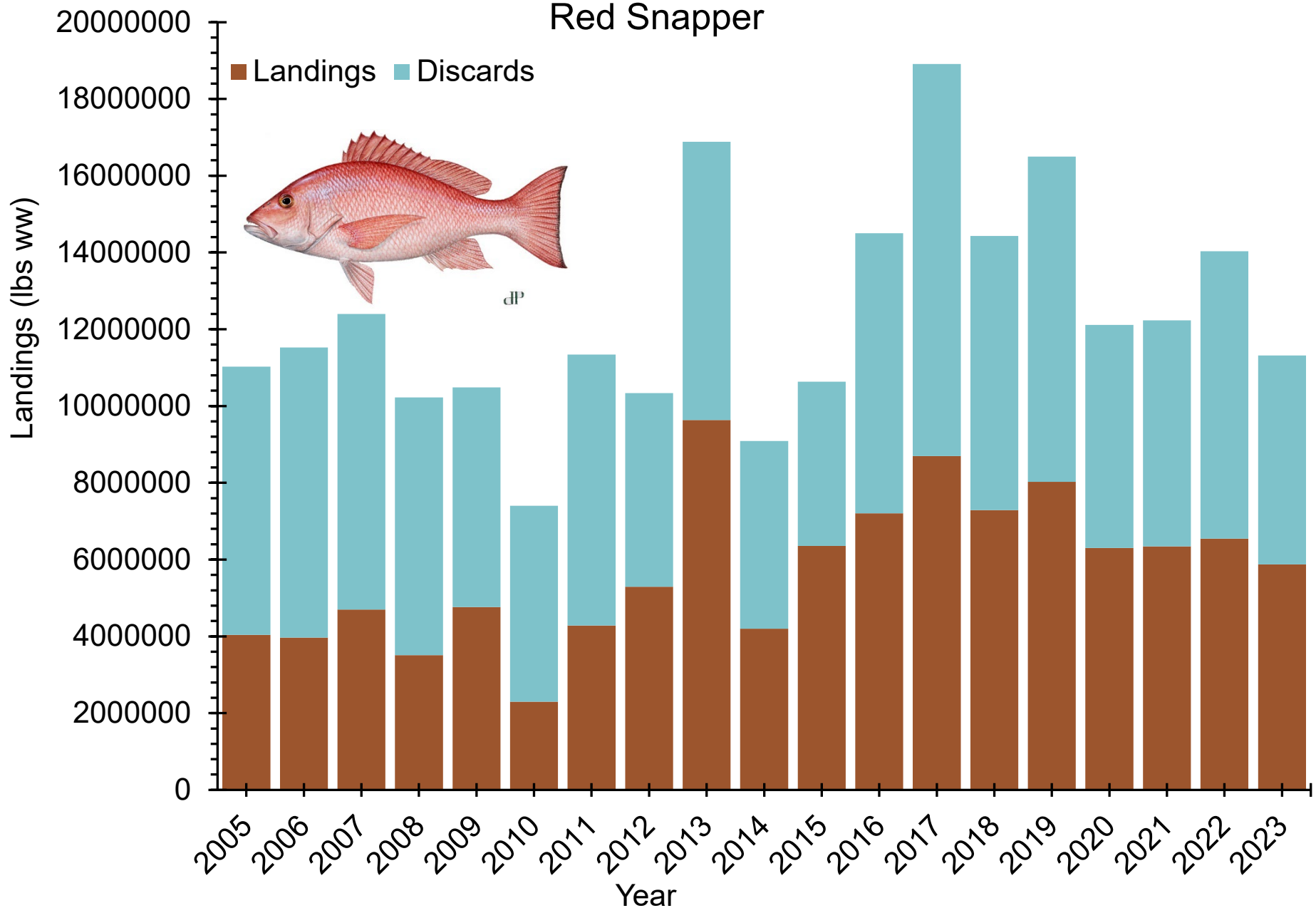
- Discards are not available for TPWD, and LA Creel does not record discards for red grouper and gag. However, red snapper discards include estimated TPWD discards generated for SEDAR 98



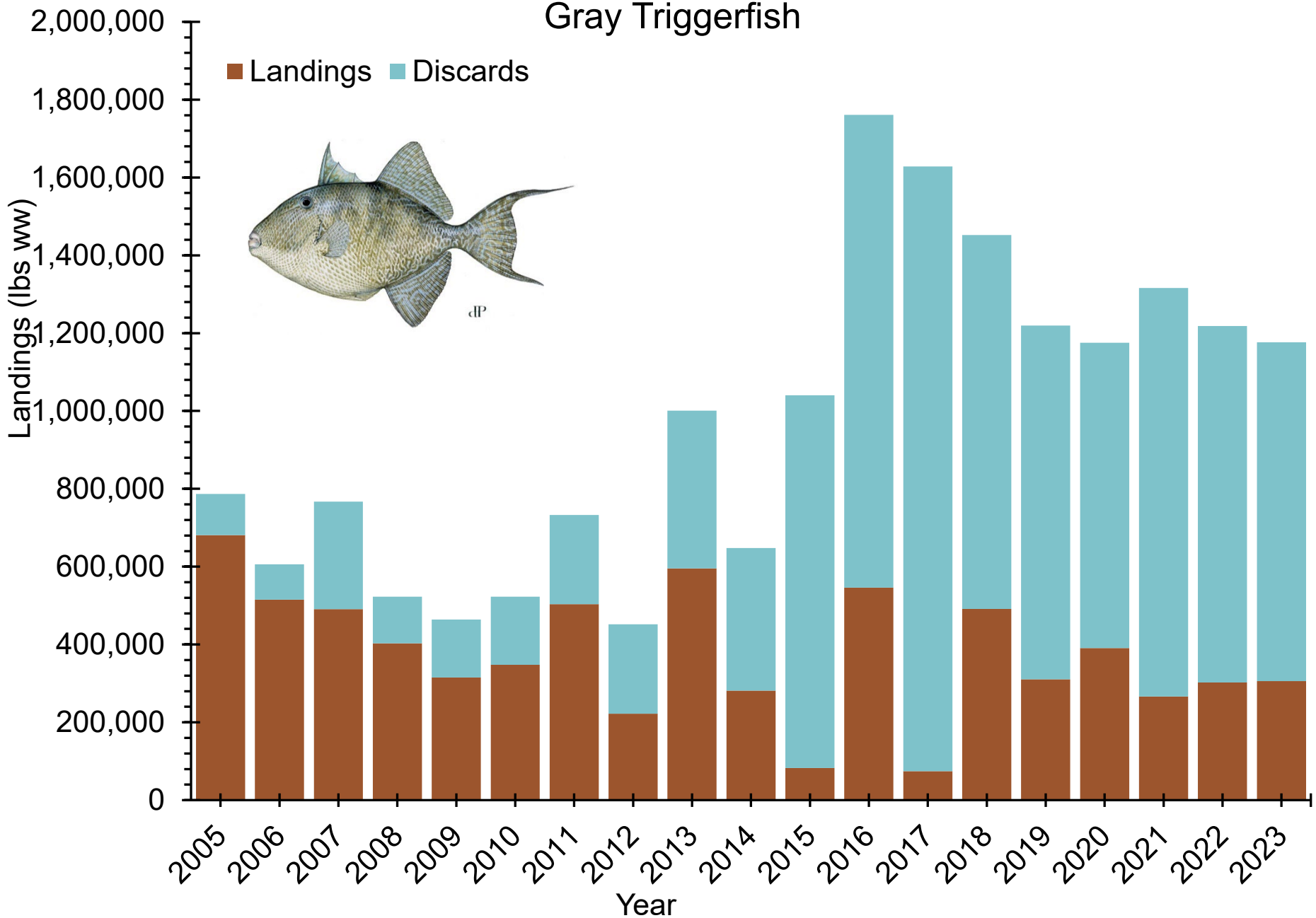
Discard Mortality Rates for Recreational Sector

Stock	Discard Mortality Rate	Source
Red Snapper	16.9% to 41.2%	SEDAR 74
Gray Triggerfish	5%	SEDAR 43
Red Grouper	11.6%	SEDAR 61
Gag	12%	SEDAR 72
Greater Amberjack	10%	SEDAR 70

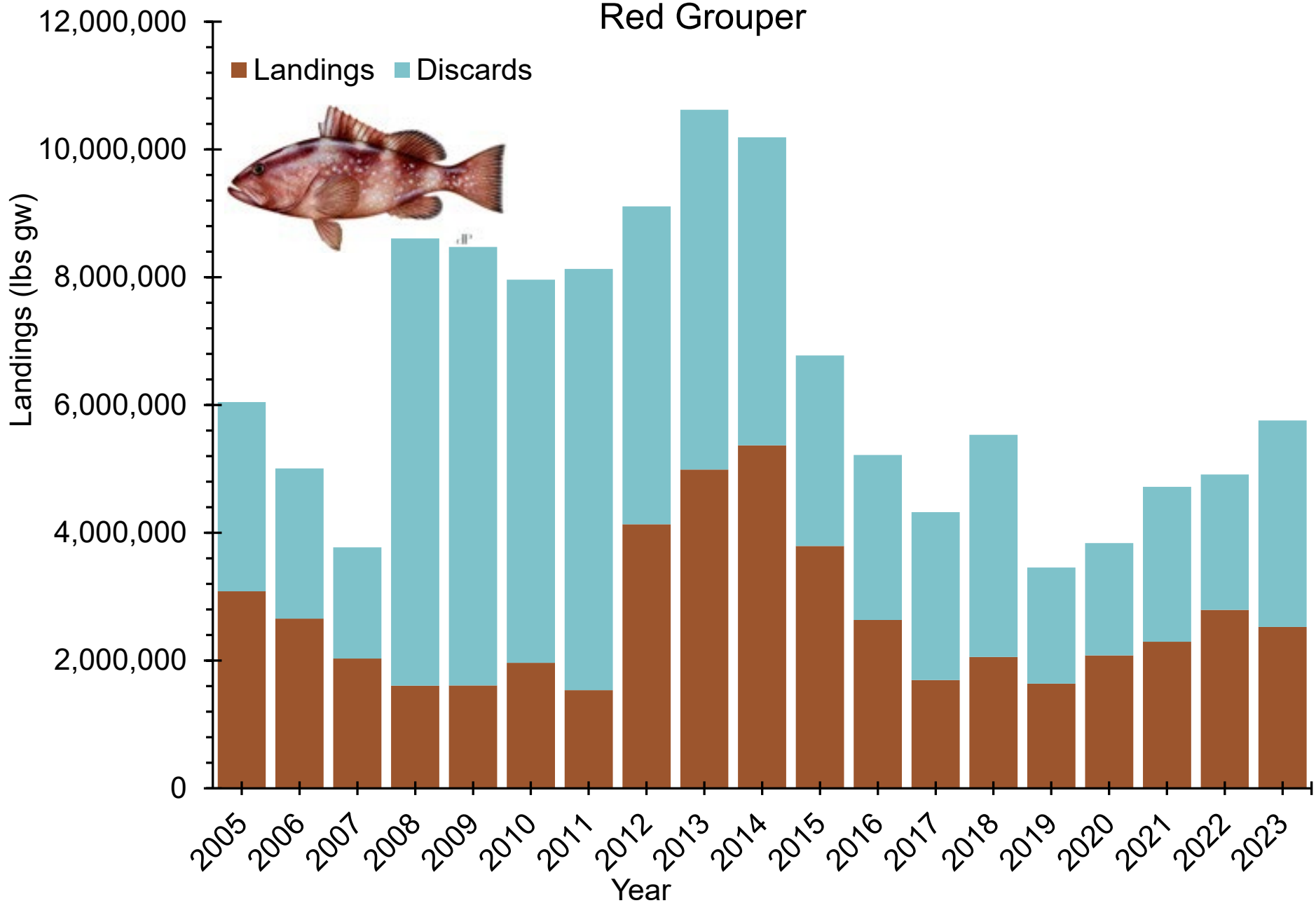
Red Snapper



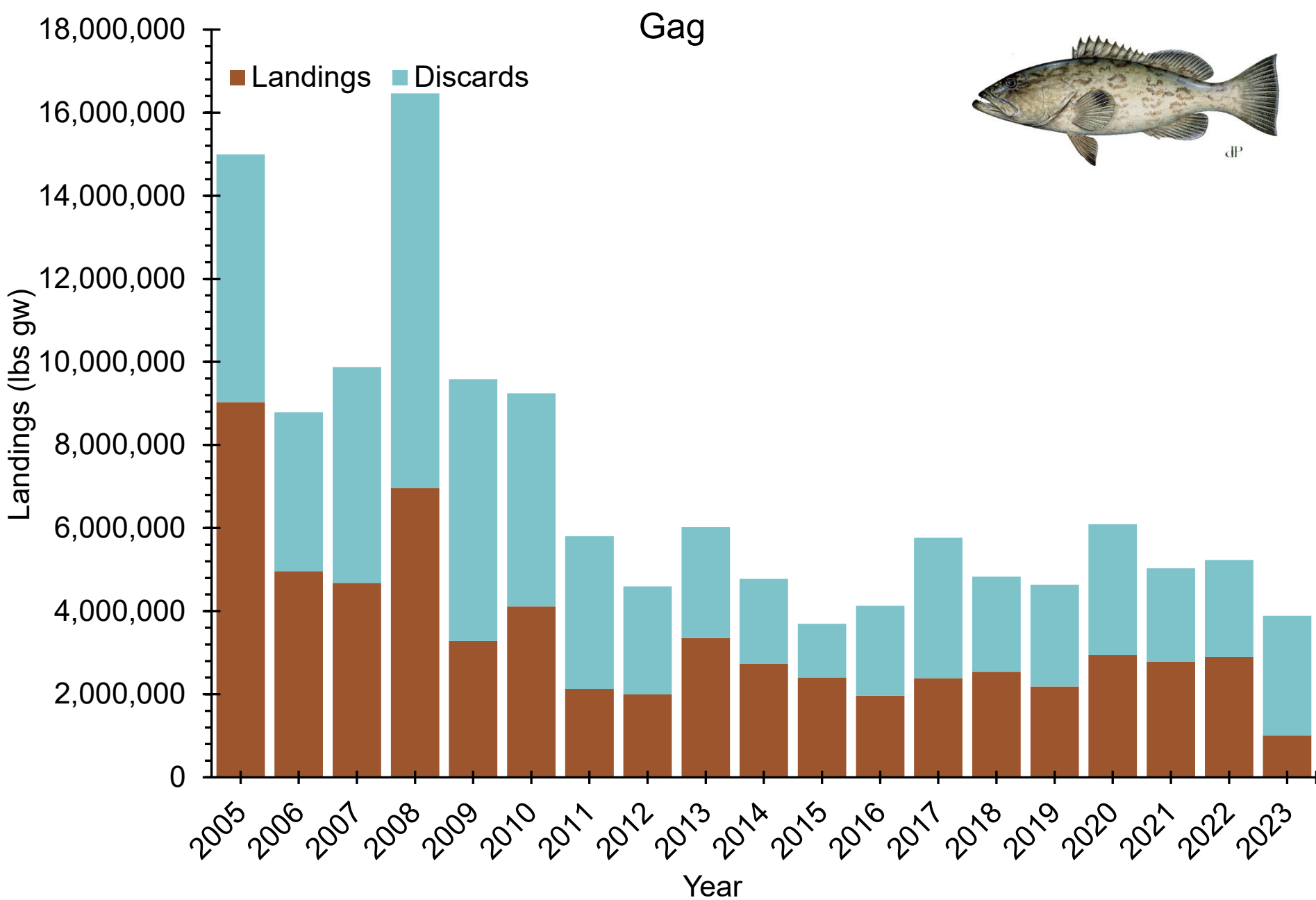
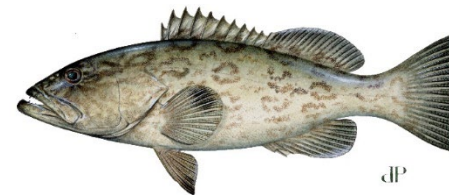
Gray Triggerfish



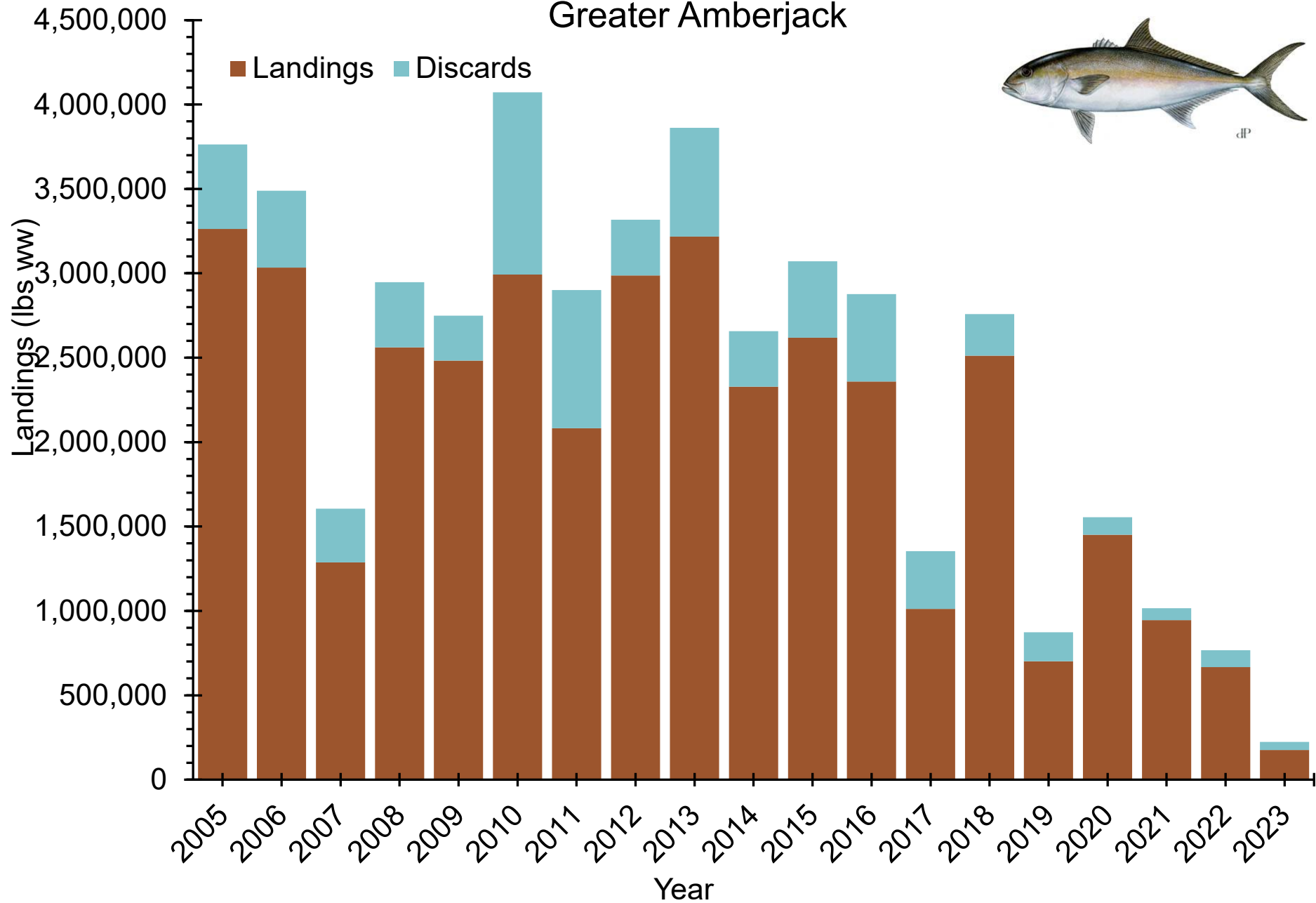
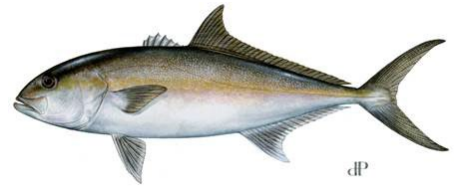
Red Grouper



Gag



Greater Amberjack



A close-up photograph of a red snapper fish, characterized by its vibrant red scales and white underbelly. The fish is shown from the side, facing right, with its mouth open and a fishing hook embedded in it. The hook is a simple J-hook with a dark, round weight. The fish is surrounded by a spray of water droplets, suggesting it has just been caught or is being pulled out of the water. The background is a dark, textured surface, possibly the water or a boat's hull.

Questions?